

MEARS



REGENCY HOUSE

Initial Accommodation Proposal

APPROACH TO THE AASC CONTRACT

- Predominant Self delivery model – ‘the buck stops with Mears’
- We accommodate Service Users in safe, secure and fit-for-purpose accommodation that is properly equipped
- Full end-to-end service
- We have put relationships and partnerships at the centre of our approach, meaning strong and robust engagement with;
 - ▶ Local Authorities
 - ▶ Strategic Migration Partnership
 - ▶ Police / Health agencies
 - ▶ AIRE Provider
 - ▶ Voluntary, community and charitable sector



INITIAL ACCOMMODATION

- Urban House will remain the primary IA site, housing 330 people and offers:
 - ▶ 24 / 7 operation to provide safe, warm and welcoming accommodation for newly arrived Asylum Seekers
 - ▶ Fully catered, providing 3 meals per day that is nutritionally balanced and meets dietary and cultural requirements.
 - ▶ All essential items provided – Baby items, Toiletries, Sanitary Products etc.
 - ▶ Appropriate space for health services and the AIRE Provider - Migrant Help
 - ▶ Dedicated welfare staff to identify vulnerabilities and needs
 - ▶ Emphasis on improved induction to support Service Users in adjusting to life in the UK – one to take place at IA followed by two more following move-in to Dispersed Accommodation



MEARS

INITIAL ACCOMMODATION (Additional Capacity)

- It has become very clear that additional capacity is required if Contingency / Hotel use is to be minimised moving forward.
 - ▶ Overflow / Hotel accommodation had to start being used in September 2019 and peaked mid-December with c.680 Service Users across 9 hotels.
 - ▶ Today that volume is c.340 across 3 hotels.
- Regency House Sheffield would provide 75 rooms.
- We will route cases into this facility that are low risk, who have been health screened and have completed their Asylum support applications with Migrant Help.



MEARS

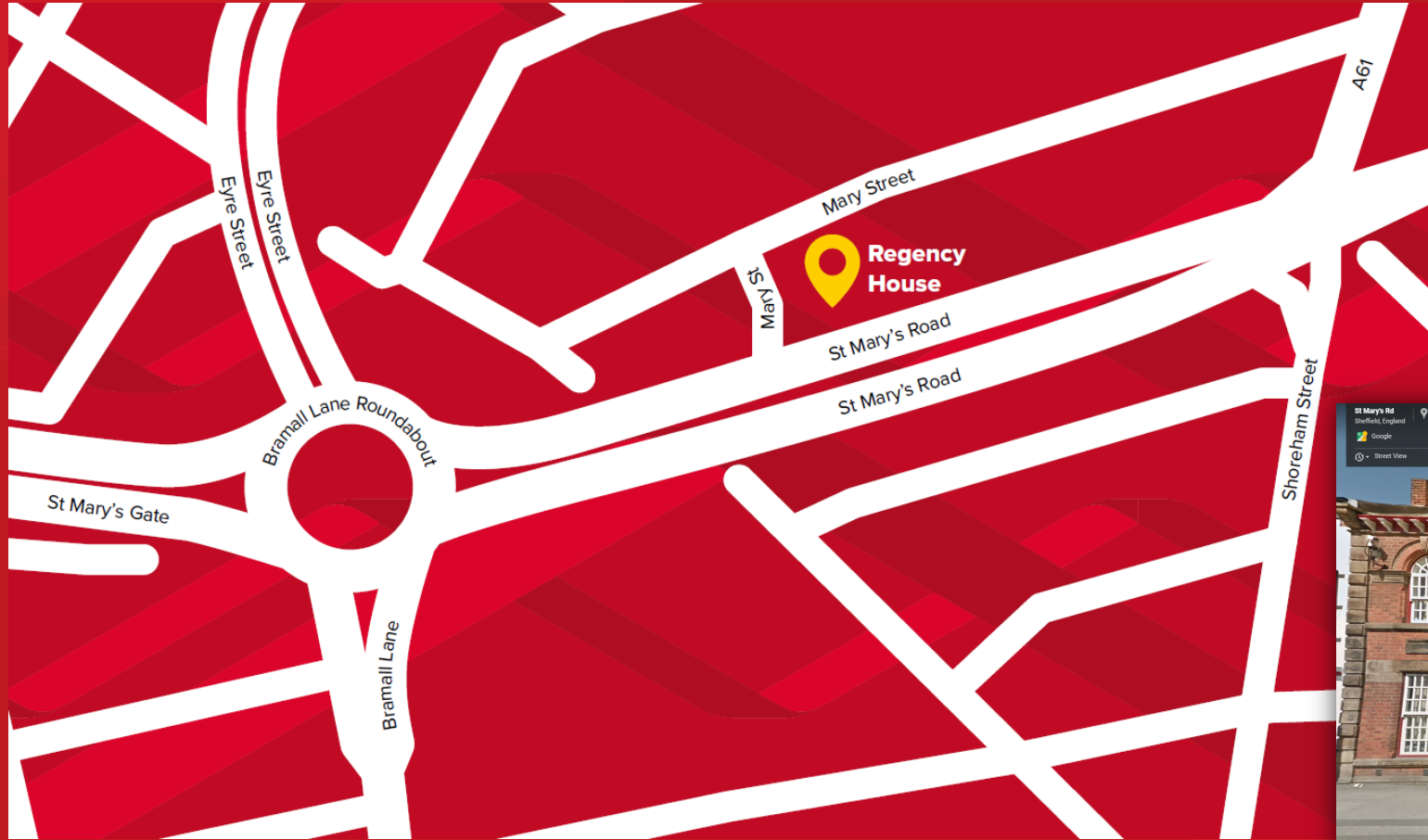
INITIAL ACCOMMODATION (Additional Capacity)

- Regency House will only house individuals with no known health risks or concerns and have no additional vulnerabilities or complex needs
- It would be operated as a Hostel and provide self contained bedrooms, with cooking and dining space
- There will be communal space including dedicated sittings rooms for Female's only, Family only and mixed gender
- There will be a classroom for organized activities
- Dedicated space for Migrant Help to operate a drop in service providing advice and guidance 2 – 3 times per week
- A dedicated health space can be provided if necessary



MEARS

REGENCY HOUSE, ST MARY'S ROAD, SHEFFIELD



REGENCY HOUSE, ST MARY'S ROAD,



MEARS

REGENCY HOUSE, ST MARY'S ROAD, SHEFFIELD



Drawn: VJ/2016
PROPOSED SOUTH ELEVATION



Drawn: VJ/2016
PROPOSED NORTH ELEVATION

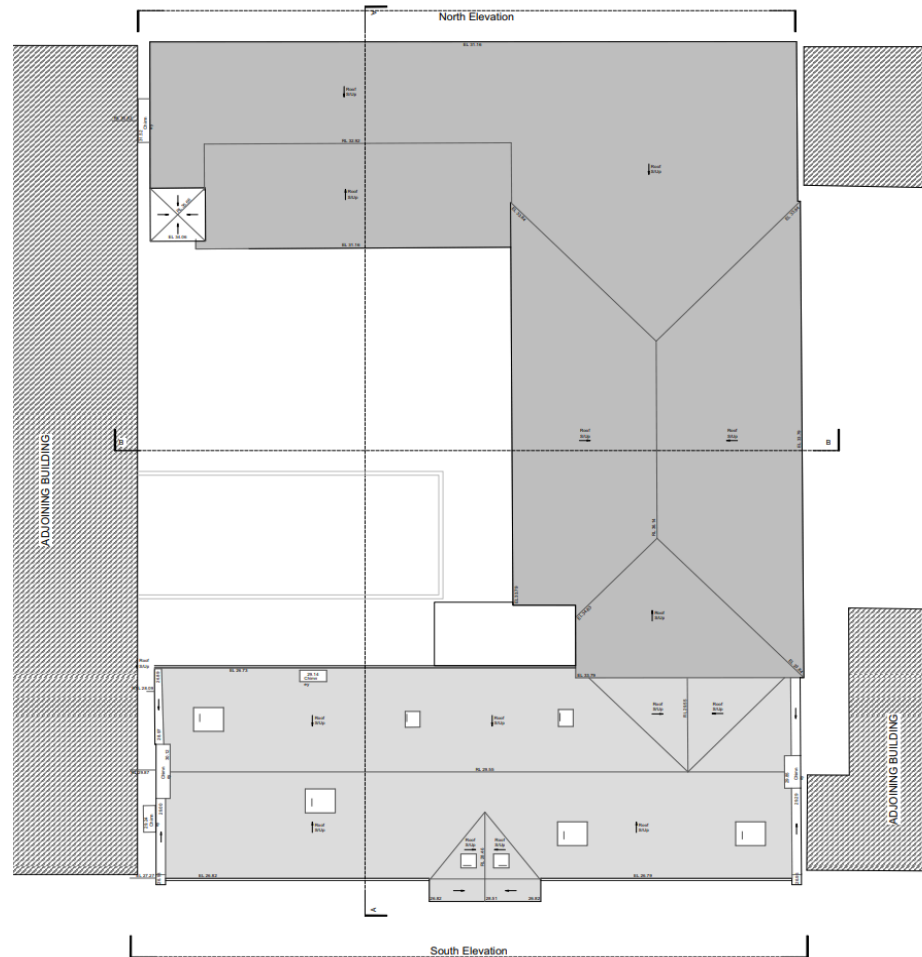
MEARS

REGENCY HOUSE, ST MARY'S ROAD, SHEFFIELD



MEARS

REGENCY HOUSE, ST MARY'S ROAD, SHEFFIELD



MEARS

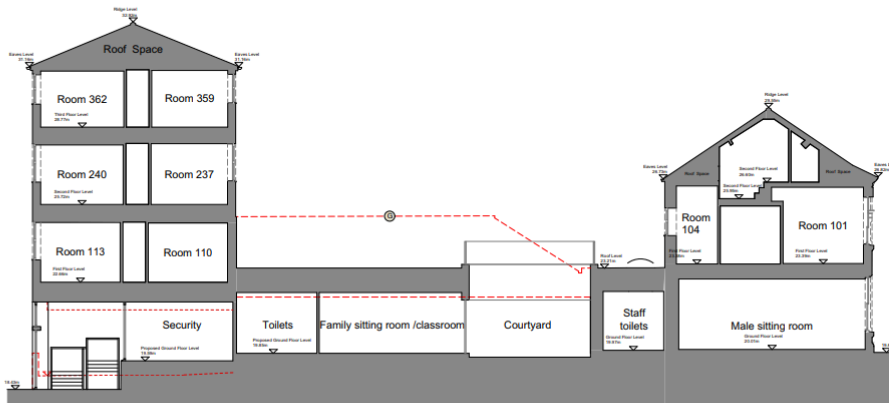
REGENCY HOUSE, ST MARY'S ROAD, SHEFFIELD



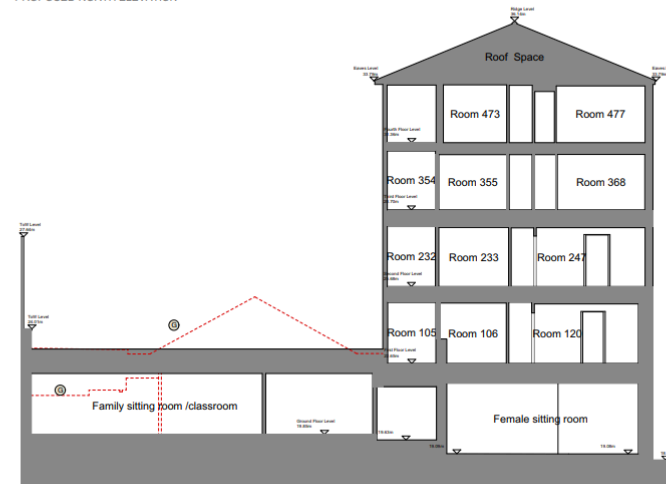
Detail: 17.20a
PROPOSED SOUTH ELEVATION



Detail: 17.20b
PROPOSED NORTH ELEVATION



Detail: 17.20c
PROPOSED SECTION A - A



Detail: 17.20d
PROPOSED SECTION B-B

SCALE

ELEVATIONAL NOTES

PLANNING CONTEXT

- Change of use for vacant student accommodation building to create safe and fit for purpose residential accommodation for asylum seekers.
- Positive Pre-application discussions with Sheffield Council
- Key planning considerations:
 - ▶ Design – external alterations to the building
 - ▶ Heritage - Cultural Industries Quarter Conservation Area
 - ▶ Amenity – Service Users and surrounding uses (e.g. residential)
 - ▶ Highways – drop-off, highway safety and highway capacity
- Key issues will be fully justified as part of the application e.g. Transport Statement, Design and Access Statement



Next Steps and Timescales

	Spring '20	Summer '20	Autumn '20	Winter '20
Pre-App Discussions				
Public/Stakeholder Engagement				
Application Preparation and Submission				
Application Determination				

Consultation and Engagement

- ▶ Digitally led, providing all stakeholder with the opportunity to give feedback
- ▶ Stakeholder Briefings (elected members, voluntary sector)
- ▶ Local resident and business engagement (A5 flyer)
- ▶ Launch consultation website www.regencyhousesheffield.co.uk
- ▶ Record all feedback, identifying emerging themes and providing response to stakeholder and resident enquiries
- ▶ Statement of Community Engagement to be submitted with the planning application



MEARS

**Any Questions/
Comments?**